



Experience

The Warmth and Economy of Coal

SAEY 92



Non Electric for a Dependable Emergency Heat Source

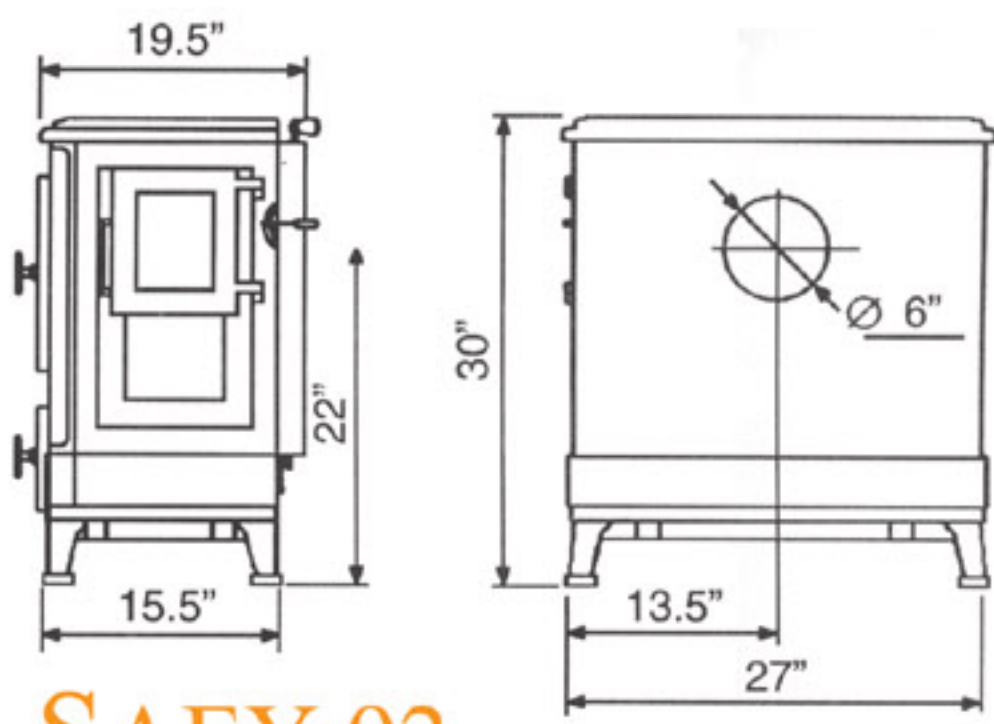
Thermostatically Controlled for Accurate Temperature Regulation

Cast-Iron for Durability & Even Heat Distribution



HANNOVER I

Automatic Feed to Assure a Long Burn

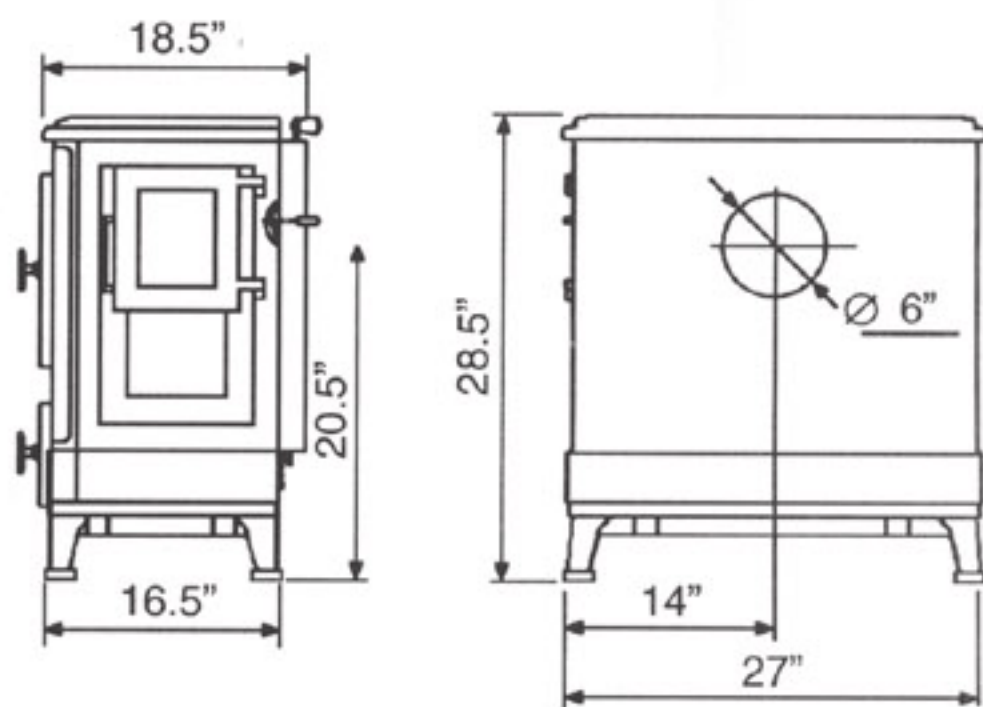


SAEY 92 SPECIFICATION

Flue Diameter	6"
Weight	400 lb
BTU's*	50,000
Heating Area* (square feet)	1600 to 2200
Coal Size	Pea

Minimum Clearances

Back	24"
Side	26"
Corner	26"



HANNOVER I SPECIFICATION

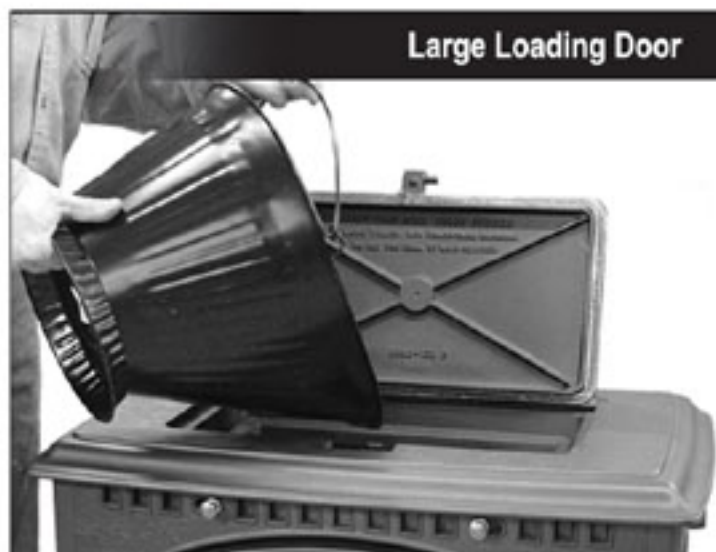
Flue Diameter	6"
Weight	450 lb
BTU's*	60,000
Heating Area* (square feet)	1,900 to 2,500
Coal Size	Pea

Minimum Clearances

Back	24"
Side	26"
Corner	26"

The Operational Simplicity and Attractive Design of a SAEY Stove

***NOTE:** The BTU's and heating areas should be used as a guide only. Many variables, including coal quality, draft, temperature, home insulation and operating techniques, will effect the actual heating capabilities of any coal stove. A barometric damper is required for coal burning. Please check with your local building codes and your insurance company for any installation requirements they may have.



Large Loading Door



Shake From Top



Large Ash Pan



Internal Sifter Grate

The SAEY 92 and HANNOVER I are thermostatically controlled, non-electric, radiant coal stoves constructed of heavy cast iron for maximum efficiency and long life. The stove is charged once a day* with anthracite pea coal through a large loading door conveniently located on top of the stove. As needed, Coal is automatically fed by gravity from the storage hopper into the burning basket. Both stoves have a large glass window for maximum fire viewing.

The shaker handle is conveniently located near the top of the stove. It moves the "sifter grate" back and forth which drops ash from the burning chamber into the ash pan. To prevent dust from entering the room, the internal shaking process is accomplished with all the gasketed stove doors tightly closed. Since a 16 hour burn time is likely*, you only need to shake the stove in the morning when you arise and in the evening before you retire for the night.

Unlike wood, anthracite pea coal requires very little storage space. The SaeY units burn about three tons of coal per year*. Three tons of anthracite pea coal can be stored in a 4' wide by 8' long by 4' high bin (coal occupies approximately 32 cubic feet per ton).

* Depends on coal quality, operating technique and heating demand.

As with all natural draft heating equipment, a carbon monoxide detector is required. If you do not have one it is important you purchase and install a carbon monoxide detector before you light your first fire.

— Your Local SAEY Dealer —